



In 2015, Titan showed its dedication to the American farmer once again by kicking off the production of agricultural specialty rubber products in Union City, Tennessee. Titan saw the American farmer needed higher quality rubber products than the standard imported products being offered and started manufacturing durable high quality rubber products for all types of livestock needs. Not only has the company filled this need, but Titan has done so with the safety and comfort of your animals as a top priority.

## Special Features



**NATURAL SYNTHETIC RUBBER BLEND**



**REDUCES LAMENESS & HOOF/JOINT ISSUES. INCREASES ANIMAL COMFORT**



**AMERICAN ENGINEERED & MANUFACTURED**



**MOISTURE-RESISTANT**



**PATENT PENDING INTERLOCKING DESIGN**

*Tread patterns for different applications. Custom design available upon request.*

## Design Features

### Fully vulcanized natural synthetic rubber blend

- High tensile strength for durability
- Soft, low durometer for the ultimate animal comfort
- Moisture-resistant

### Aggressive .3" deep double button tread pattern

- Animals move with confidence like natural environment
- Helps reduce lameness caused from slipping
- Helps reduce hoof and joint issues caused by hard surfaces

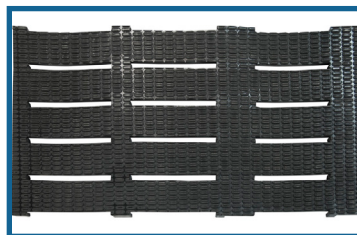
### Patent pending interlocking edge lug design

- Only design that secures the mat edges down
- Keeps waste materials from getting under mats
- Keeps mats securely in place

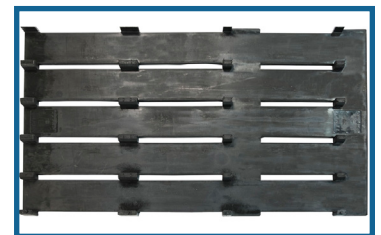
### 1/4" thicker than competitors standard mat



**Double button tread**



**Custom Slat - Front**



**Custom Slat - Back**

**Warranty Statement:** Products available through Summit Livestock Facilities are warranted by the original manufacturer. Summit Livestock Facilities offers no additional warranty on these products.

3823 W 1800 S Remington, IN 47977 | 800.213.0567 | [SummitLivestock.com](http://SummitLivestock.com)

**Authorized Reseller:**

